

## Panel PC Series

## Fanless Industrial Computers

## Industrial Components

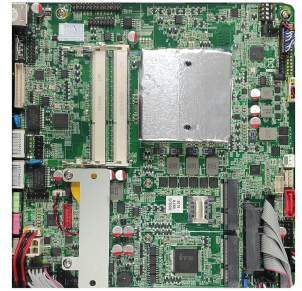


Elevation

15" INTEL i7 2.5GHZ 6th generation Industrial Touch Panel PC with 6500u processor.

15" touchscreen monitor with resistive technology and fanless rugged computer in black aluminium chassis, with passive cooling system without using fans.

It has a double HDMI and VGA video output for the connection of 1 external monitor which, with its own screen, makes it possible to operate with 2 screens at the same time. **Double LAN** (RJ45 network card). VESA mounting system or panel mountable with the use of the supplied screw system.



Inside

## TECHNICAL SPECIFICATIONS

**Direct Importer:** Grupo EOS Ibérica SA

**Processor:** Intel i7 6500u 2.5Ghz to 3.1Ghz

**Resolution:** 1024x768 (Native)

**RAM:** Supports up to 16GB SODIMM DDR3/2800

**ROM:** SATA SSD / MSATA SSD / SATA HDD

**Audio:** 2x Jack 2,5; Speakers/ MIC

**Socket:** 2x RAM / 1x SATA / 1x MiniPCIE / 1x mSATA

**Ports:** 2xUSB 3.0 / 1xHDMI/ 1xVGA/ 2 RS232 (COM2 supports RS422/485).

**LAN:** 2xRJ45

**OS:** Windows 7, 8, 10, Linux Compatible

**Supply:** DC100-240V AC input / DC12v/6A output

**Power consumption:** ~ 35-65 watts

**Vibration:** Vibration resistant

**Humidity:** 5% ~ 90% (non-condensing)

**Operating temp.:** -10°C~60°C

**Storage temp.:** -20°C~70°C

**Warranty:** 1 Year (Extendable up to 3 years)

## OTHER TECHNICAL DATA

**Mounting type:** Panelable yes, VESA yes, RACK no.

**Processor Frequency:** Minimum 2.5Ghz, maximum 3.1Ghz.

**Graphics:** Integrated Intel HD Intel® 520 LVDS, Dual HDMI/ VGA Output

**RAM:** 0 Gb on Board + 2 Socket SODIMM/1.35v (4/8Gb x 2)

**ROM:** SSD SATA / SSD MSATA (120, 240Gb) / HDD SATA (500Gb, 1Tb) \* Consult other capacities.

**Audio:** Realtek HD ALC662 Line-out and MIC

**LAN:** Realtek RTL8111F or Intel I210/I211 AT 10/100/1000Mbps. Wake on Lan.

**IP Protection Display:** IP65. Water jetted (from any angle) through a 6.3 mm diameter nozzle must not enter, provided that the panel mounting is correct. **IP Protection Industrial PC:** IP50. Dust ingress cannot be prevented, but dust must not enter in such a quantity as to interfere with the correct operation of the equipment.

**Wireless:** Mini PCI Express Intel 7260BN. WiFi 802.11 b/g/n (OPTIONAL).

**GPS:** Mini PCI Express u-Blox pci-5s-1 - 500.

**3G/GPS:** Mini PCI Express Huawei EM770w. (OPTIONAL)

**4G/GPS:** Mini PCI Express Huawei ME909u-521. (OPTIONAL)

**Dimensions:** 365 x 290 x 55 mm (LxWxH)

**Weight:** 5'0 Kg

**Packing:** Single Box; PC, Power Supply, Power Cable, Drivers.

## I/O PORTS



Front



Rear

## CONNECTIVITY OPTIONS



**WiFi module:** Intel 7260BN  
**WiFi Antenna:** Yes  
**Connection cable:** Yes  
**SMA extender:** Optional

**4G/GPS module:** ME909u-521

**4G/GPS antennas:** Yes

**Connection cable:** Yes



## SISTEMA DE MONTAJE VESA



## PRODUCT VALUES

- > Dual RJ45 network card
- > Double socket RAM DDR3
- > Monitor 15" + Dual video out.
- > Resistant to aggressive environments; dust, grease, vibrations.
- > Resistant to extreme temperatures and humidity.
- > Expandable equipment in its configuration, up to 16gb of RAM memory.
- > Possibility of Wifi or 4G / GPS connection.
- > Very low power consumption.

## MOST COMMON APPLICATIONS

- > HMI control panels
- > Integration in switchboards
- > Industrial control systems (ICS)
- > Distributed control systems / SCADA
- > Data Acquisition Systems (DAQs)
- > Factory assembly lines
- > Mounting on transport vehicles
- > Wireless station (Wifi/4G/GPS)
- > Outdoor advertising and Digital Signage.
- > Interactive kiosks, multimedia
- > Self-paid, unattended kiosks

## APPLICATION SECTORS

- > Agricultural engineering
- > Meat industry
- > Automation
- > Aerospace
- > Automotive
- > Data Centers
- > Distribution
- > Naval sector
- > Pharmaceutical Industry
- > Transport & Logistics
- > Transmission applications

## SOME SUCCESS STORIES

- > Meat industry
- > Shop-floor assembly
- > Solutions for agricultural engineering

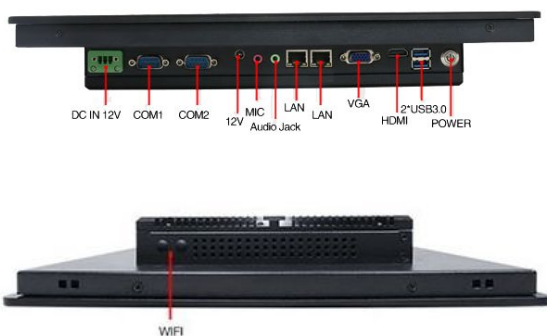
## ALTERNATIVE REFERENCES

- > Panel Pc industrial 15" ePX15 i5-4200u
- > Panel Pc industrial 17" ePX17 i5-4200u
- > Pantalla táctil IR 17 + pc industrial

## CERTIFICATIONS



## CONNECTIONS



## DIMENSIONS

