



Elevation

Industrial Touch Panel PC 10,4" INTEL i5 1.6GHZ 4th generation with 4200u processor.

10.4" resistive technology touchscreen monitor and ruggedised fanless computer in black aluminium chassis, with passive cooling system without the use of fans and fully protected against water, **IP65 protection in its entirety.** **High brightness display 1000 nits.**

M12 connections: 1 COM RS232, 1 LAN, 2 USB, 1 VGA



TECHNICAL SPECIFICATIONS

Direct Importer: Grupo EOS Ibérica SA

Processor: Intel 4200U i5 1.6Ghz
Resolution: 1024x768 (Native) 4:3
RAM: Supports up to 8GB SODIMM DDR3/2800
ROM: SATA SSD / MSATA SSD / SATA HDD
Audio: -
Socket: 1x RAM / 1x SATA / 1x MiniPCIE / 1x mSATA
Ports: 2 x USB 2.0 / 1 x COM2.
 x COM2. M12
LAN: 1x ethernet M12
OS: Windows 7, 8, 10, Linux Compatible
Supply: DC100-240V AC input / DC12v output
Power consumption: ~ 35-65 watts
Vibration: Vibration resistant
Humidity: 5% ~ 95% (non-condensing)
Operating temp.: -10°C~60°C
Storage temp.: -20°C~80°C
Warranty: 1 Year (Extendable to 3 years)

OTHER TECHNICAL DATA

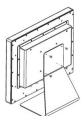
Mounting type: Panelable (consult us) , VESA yes, RACK no.

Processor frequency: Minimum 1.6Ghz, maximum 2.6Ghz.
Graphics: Integrated Intel HD4400 LVDS
RAM: 0 Gb on Board + 1 Socket SODIMM/1.35v (4/8Gb)
ROM: SSD SATA / SSD MSATA (120, 240Gb) / HDD SATA (500Gb, 1Tb) * Consult other capacities.
Audio: Realtek HD ALC662
LAN: Realtek RTL 8111E Gigabit Ethernet controller. Wake on Lan.
IP protection: IP65. Water jetted (from any angle) must not enter through a 6.3 mm diameter nozzle. It complies with this protection on both the front and the rear.
Wireless: Not available
GPS: Not available
3G/GPS: Not available
4G/GPS: Not available
Dimensions: 270 x 217 x 50 mm (LxWxH)
Weight: 5'4 Kg
Packing: Single Box; PC, Power Supply, Power Cable, Drivers.

I/O PORTS



MOUNTING OPTIONS



VESA. 100x100mm
 DESSERT
 THE WALL

PRODUCT VALUES

- > Full IP65 protection for demanding environments
- > Specially designed for environments with high humidity or the need to use water.
- > Resistant to aggressive environments; dust, grease, vibrations.
- > Resistant to extreme temperatures and humidity.
- > Very low power consumption.

MOST COMMON APPLICATIONS

- > HMI control panels
- > Integration in switchboards
- > Industrial control systems (ICS)
- > Distributed control systems / SCADA
- > Data Acquisition Systems (DAQs)
- > Factory assembly lines
- > Assembly on transport vehicles
- > Outdoor advertising and digital signage.
- > Interactive outdoor kiosks
- > Self-pay, unattended kiosks

APPLICATION SECTORS

- > Agricultural engineering
- > Meat industry
- > Automation
- > Aerospace
- > Automotive
- > Renewable energies
- > Distribution
- > Naval sector
- > Pharmaceutical Industry
- > Transport & Logistics
- > Transmission applications

SOME SUCCESS STORIES

- > Meat industry
- > Shop-floor assembly
- > Solutions for agricultural engineering

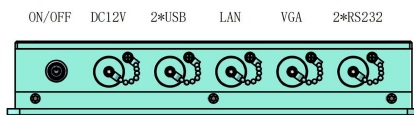
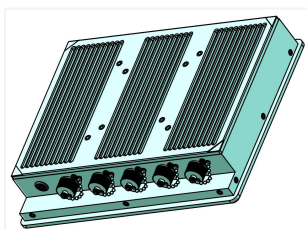
ALTERNATIVE REFERENCES

- > Panel Pc industrial 15" ePX15 i5-4200u
- > Panel Pc industrial 17" ePX17 i5-4200u
- > IR touch screen 17" + industrial pc

CERTIFICATIONS



CONNECTIONS



DIMENSIONS

